



Technical University  
of **Leoben**



01

Why study in Leoben?

02

What to expect from your studies?

03

What does campus life look like?

04

What are your job prospects?

05

Our study programmes

06

Would you like to apply?



01 Why study in Leoben?

02 What to expect from your studies?

03 What does campus life look like?

04 What are your job prospects?

05 Our study programmes

06 Would you like to apply?



# Studying at Montanuniversität Leoben

- ✓ Technical university, geared to the value creation cycle
- ✓ Practical training in modern laboratories
- ✓ Research possibilities
- ✓ Small study groups
- ✓ Excellent career prospects
- ✓ National and international recognition

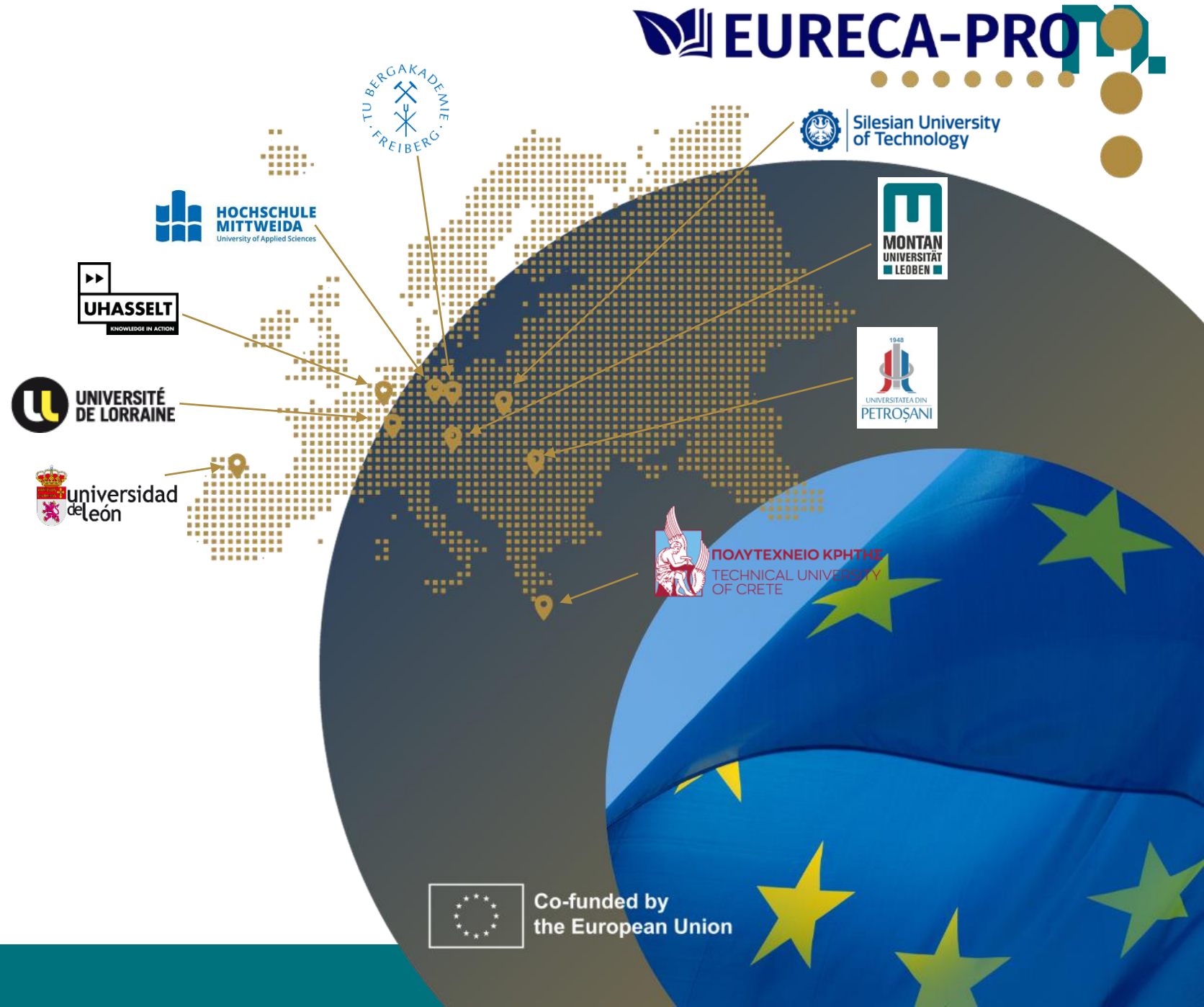


# International

## EURECA-PRO

European University on  
Responsible Consumption and  
Production

- ✓ Alliance:  
9 partners from  
8 european countries
- ✓ Leadership:  
Montanuniversität Leoben
- ✓ Goal:  
studying, teaching and  
researching in the field of  
responsible consumption and  
production





01

Why study in Leoben?

02

What to expect from your studies?

03

What does campus life look like?

04

What are your job prospects?

05

Our study programmes

06

Would you like to apply?



## Your path to studying I

### Summer Camps for students

You are 16 or older? Then join our summer camps!

01.-03.  
July

MetalDays

22.-26.  
July

CO<sub>2</sub>Days

26.-31.  
August

FutureDays

# Your path to studying II



„Studieren  
Probieren“

before your studies



Online  
self-study  
course  
MOOC



STEM  
@Leoben

during your studies



ÖH-  
Tutorial



Peer  
Teaching



## ONBOARDING PHASE

- ✓ No entrance exam
- ✓ Joint 1<sup>st</sup> year of study
- ✓ Students' Introduction and Orientation Phase (STEOP) ends after just six weeks and 10 ECTS
- ✓ Gain key skills in mathematics, physics, chemistry, mechanics





## BACHELOR'S

- ✓ 13 bachelor's programmes in German and English
- ✓ 6 semesters + 1 practical term
- ✓ Introduction to your field of studies
- ✓ Bachelor's thesis
- ✓ Degree: BSc

## MASTER'S

- ✓ 25 master's programmes in German and English
- ✓ 4 semesters
- ✓ Specialization in disciplines
- ✓ Master's thesis
- ✓ Degree: Dipl.-Ing. or MSc







01

Why study in Leoben?

02

What to expect from your studies?

03

What does campus life look like?

04

What are your job prospects?

05

Our study programmes

06

Would you like to apply?





Montanuniversität  
Leoben

# Campus





# Campus Life



In Leoben, all campus buildings are within walking distance

The train station is just minutes away from the university



Live, study and party cheaply in Leoben

Modern halls of residence



# Campus Life



71  
university sports  
courses

In- and outdoor-  
sports facilities



City in the middle of  
forests & mountains

Asia Spa  
Outdoor & indoor pool



# Campus Life



Rhetoric, ethics and  
personality classes

Language classes



Orchestra  
Choir

Culture  
Museums





01

Why study in Leoben?

02

What to expect from your studies?

03

What does campus life look like?

04

What are your job prospects?

05

Our study programmes

06

Would you like to apply?





# Job Prospects

Subject-specific  
collaborations  
with chairs

Stunning  
research  
projects

Strong network  
ties with over  
150 partner  
universities

Delta Academy:  
management  
and leadership  
training for  
selected  
students

High demand  
for engineers in  
industry and  
business

Excellent career  
opportunities  
in economics,  
industry,  
research,  
development,  
management



# FACTS & FIGURES

**26** Master's programmes

**German & English**  
speaking environment

**13** Bachelor's programmes

**Unique internships**  
in cooperation with industry

**Excellent career opportunities**  
significantly higher income

**Future-oriented careers**  
national & international

**Life-long network**

**1,000+**  
graduates as members  
in our Alumni Club

**Percentage of female students**

**≈30%**

**Start-up support**

achieving  
an **80%** success rate

**International mobility**  
**150** partner universities  
globally

**Culture @MUL**

university choir,  
string orchestra,  
brass band

**70+**  
sports  
courses

**Personal environment** **5:1** student-to-  
professor/lecturer ratio

**20+**  
language  
courses

**International community**

**3,000** from **89**  
students different countries

**Study support**

study buddies,  
tutorials, peer-teaching

**Jobs@MUL**  
**≈10%** of our students are  
employed at MUL



Technical University  
of Leoben

April 2025



**26** Master's  
programmes

**German  
& English**

speaking environment

**13** Bachelor's  
programmes

**Unique internships**

in cooperation with industry

**Excellent career  
opportunities**

significantly higher income

**Life-long network**

**1,000+**

**Future-oriented  
careers**



**Excellent career opportunities**  
significantly higher income

**Future-oriented careers**  
national & international

**Life-long network**

**1,000+**  
graduates as members  
in our Alumni Club



**Percentage of female students**

**≈30%**

**Start-up support**

achieving

an **80%** success rate

**International mobility**

**150** partner universities  
globally

**Culture @MUL**

university choir,  
string orchestra,  
brass band

**70+**

sports  
courses

**Personal 5-1** student-to-

**20+**

language



~30%

an 80% success rate



International mobility

150 partner universities globally

Culture @MUL

university choir, string orchestra, brass band

70+

sports courses

.....

20+

language courses

Personal environment 5:1 student-to-professor/lecturer ratio

International community

3,000 students from 89 different countries

Study support

study buddies, tutorials, peer-teaching





01

Why study in Leoben?

02

What to expect from your studies?

03

What does campus life look like?

04

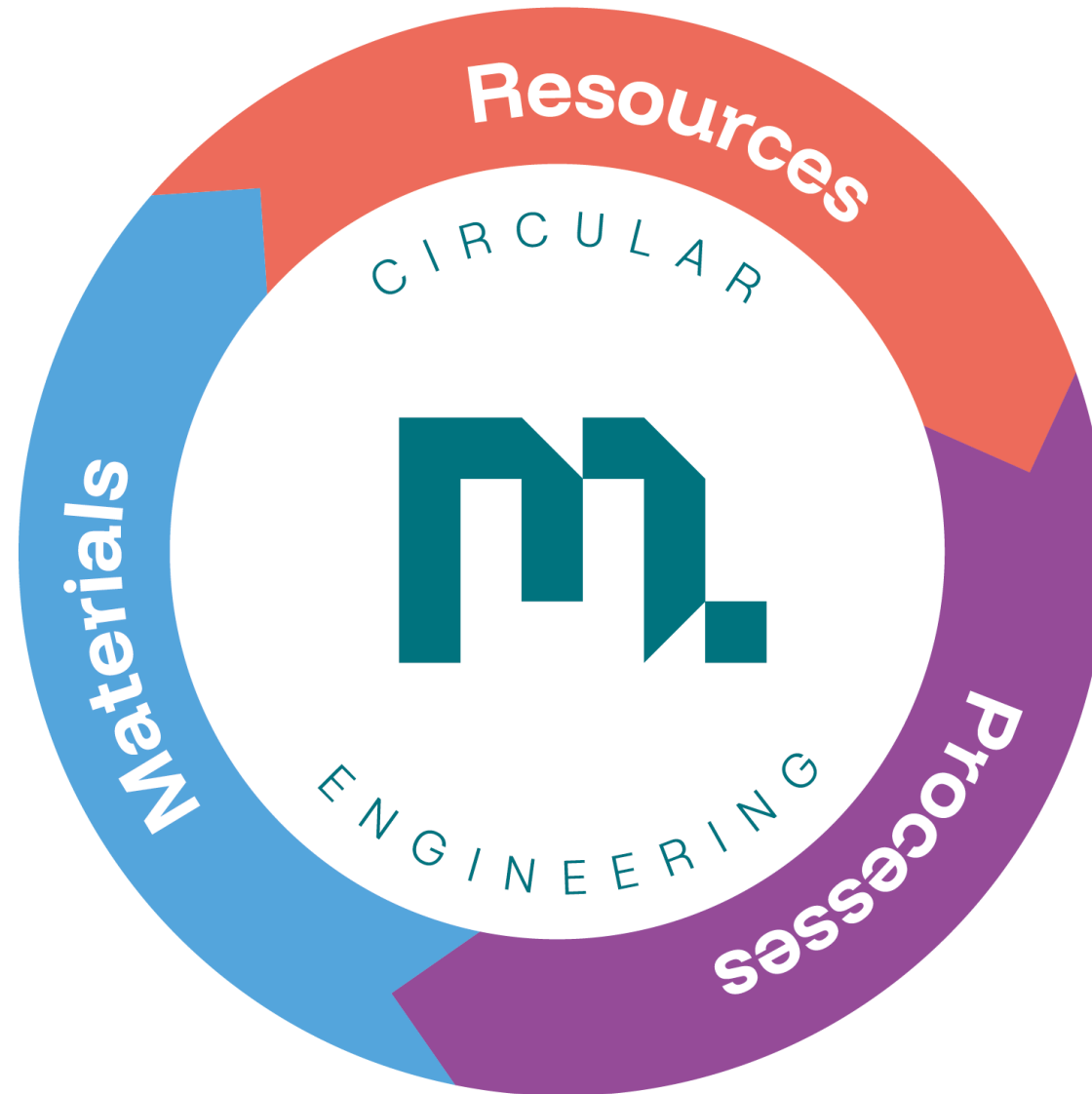
What are your job prospects?

05

Our study programmes

06

Would you like to apply?





Resources

Processes

Materials

# Bachelor's Programmes



## Resources



Sustainable extraction & processing of mineral raw materials & energy

## Processes



The future of production: renewable & low-CO<sub>2</sub> energy sources

## Materials



Optimization of material properties for resource-conservation



# Resources



- Applied Geosciences
- Energy Engineering
- **Geoenergy Engineering**
- Mineral Resources Engineering

Processes

Materials

# Processes



- **Circular Engineering**
- Industrial Data Science
- Industrial Logistics
- Recycling
- Metallurgy and Metal Recycling
- Environmental and Climate Protection Technology
- **Responsible Consumption and Production** (EURECA-PRO)



# Materials



- Materials Science and Technology
  - Major in Polymer Science and Technology
  - Major in Metals, Ceramics, and Functional Materials
  - Major in European School of Materials (EEIGM)
- Mechanical Engineering

Resources

Processes

Materials

# Master's Programmes





RESOURCES		De	En
■ Advanced Mineral Resources Development *			⚡
■ Applied Geosciences			⚡
■ Applied and Exploration Geophysics *			⚡
■ Building Materials and Ceramics *			⚡
■ Energy Engineering	⚡		
■ Geoenery Engineering			⚡
■ Industrial Management and Business Administration	⚡		⚡
■ Petroleum Engineering			⚡
■ Petroleum Engineering *			⚡
■ Mining and Tunnelling			⚡
■ Raw Materials Engineering			⚡
■ Sustainable Mineral and Metal Processing Engineering *			⚡
MATERIALS			
■ Advanced Materials Science and Engineering *			⚡
■ Polymer Science and Engineering			⚡
■ Materials Science			⚡
■ Mechanical Engineering	⚡		
PROCESSES		De	En
■ Circular Engineering			⚡
■ Digital Civil Engineering Science			⚡
■ Environmental and Climate Protection Technology	⚡		
■ Industrial Data Science			⚡
■ Industrial Logistics			⚡
■ Metallurgical Engineering			⚡
■ Metallurgy	⚡		⚡
■ Recycling			⚡
• Responsible Consumption and Production (EURECA-PRO) **			⚡
■ Safety and Disaster Management			⚡
• Sustainable Materials *			⚡

\*International Joint / Double Degree Programme

\*\*This programme is delivered within the framework of the Joint MSc in New Science and Technology



01

Why study in Leoben?

02

What to expect from your studies?

03

What does campus life look like?

04

What are your job prospects?

05

Our study programmes

06

Would you like to apply?





We're looking forward to  
meeting you!



Move mountains

## Admission



Study Support Center  
Montanuniversität Leoben  
Peter Tunner-Straße 23/II  
8700 Leoben

## Online-Counselling



 [www.unileoben.ac.at](http://www.unileoben.ac.at)

 Montanuniversität Leoben

 montanunileoben

Thank you!

**Move mountains**